



# Welcome to Letheringham Lodge!

Pauline + Matthew Bickerton

Philip Aitken

Leigh Alston

Timothy Easton

Edward Martin

Joanne Martin

John Walker

# Quick Introduction

Pauline and Matthew Bickerton

- Together 33 years - no children that we know of!
- Setup and sold a web design co. from 1995 to 2000
- Sailed and lived abroad for 9 years
- Returned to UK in 2009, trained as psychotherapists (Metanoia) and artists (Central St Martins)





This property has been removed by the agent.  
It may be sold or temporarily removed from the market

[View similar properties >](#)

## 7 bedroom detached house for sale

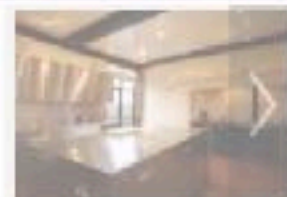
Letheringham, Nr Woodbridge, Suffolk, IP13 0NA



Start slideshow

< 1 of 8 >

Picture



Description

Floorplan

Map & Street View

Market Info

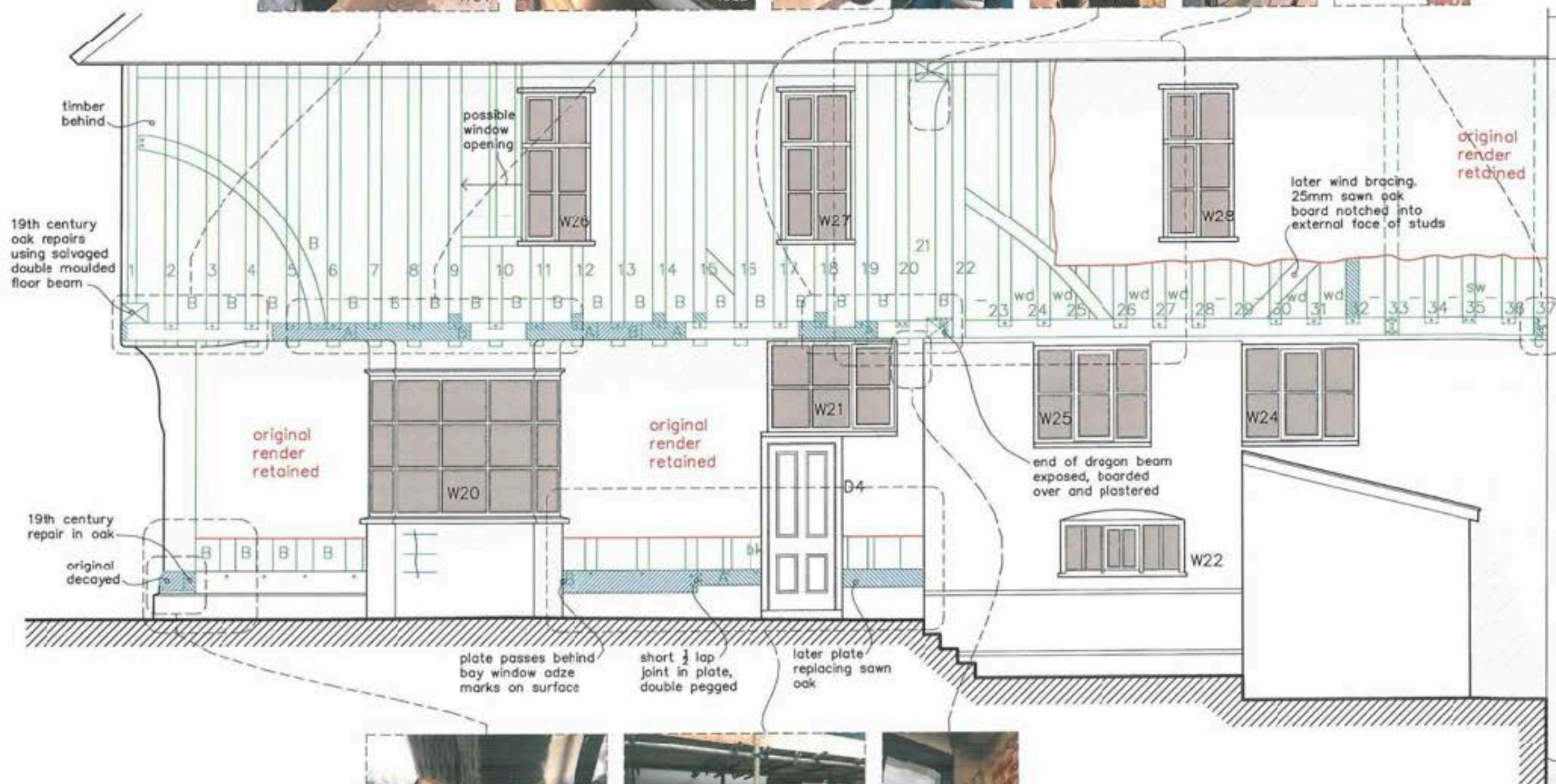












# Key

- timber frame
- plaster removed
- repairs











1 June 2015







And now for the good bit  
- the history.....









Letheringham Hall

Letheringham Lodge





John Kirby

WICKHAM-MARKET, so called to distinguish it from the other two Wickhams in this County, viz. Wickham-Brook and Wickham-Skyth, is a Thoroughfare Town, extending itself on the Road about half a Mile. It has been a Market Town, but now not so. The Quarter Sessions were held here, having had a Shire-Hall for that purpose, and some now living remember its being removed by the Lord of the Manor, and a Farm House built therewith at Letheringham, now called the Old-Hall. The Church and Spire Steeple are situate on a Hill; the top of the Steeple (tho' but 23 Yards high) affords the best Prospect of any in the Country, in a clear Day there may be easily discerned

D





Detail from John Kirby's Map of Suffolk 1736





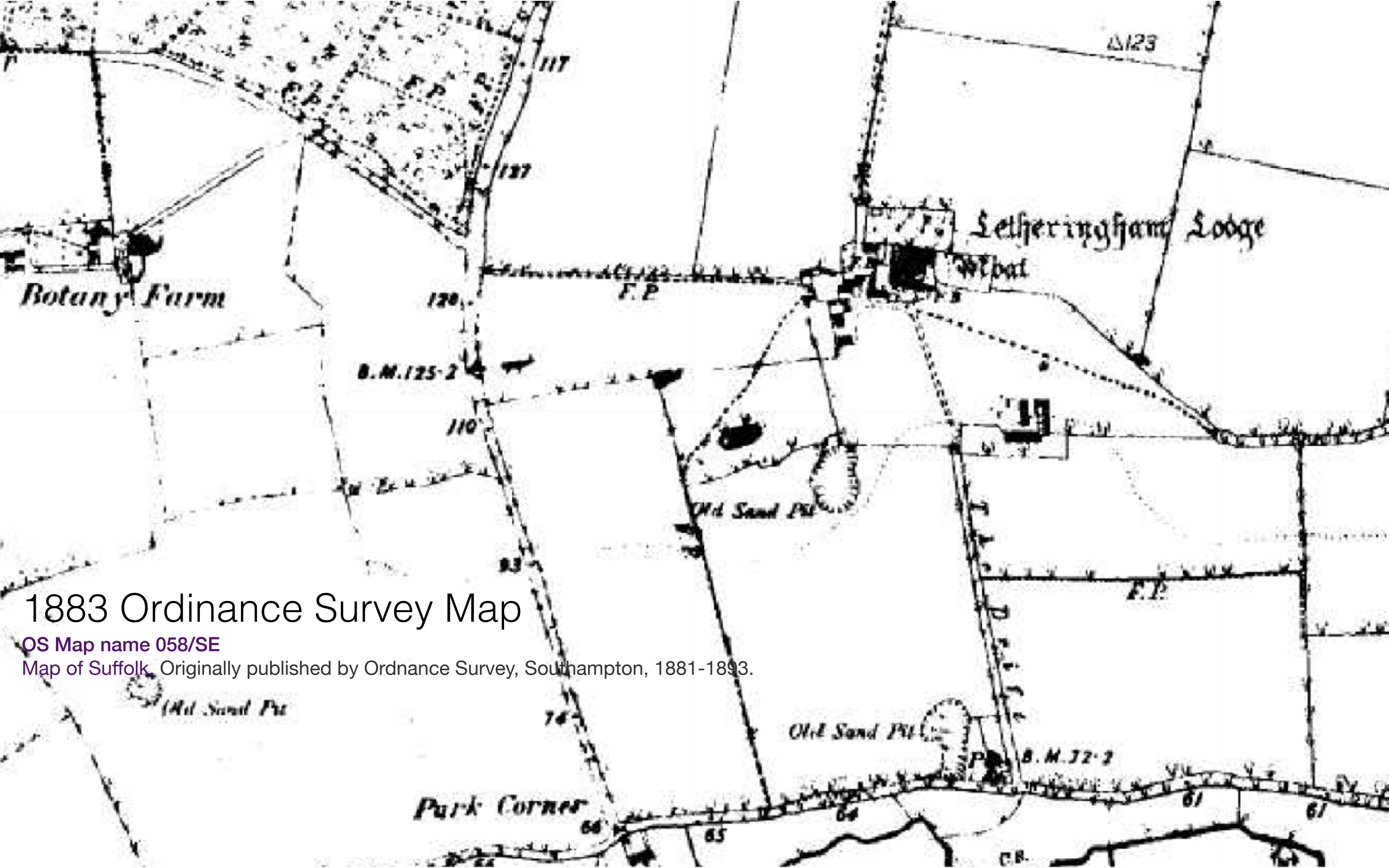


Mursey  
a r p  
000132



LEATHERINGHAM LODGE FARM.  
Lot 35.



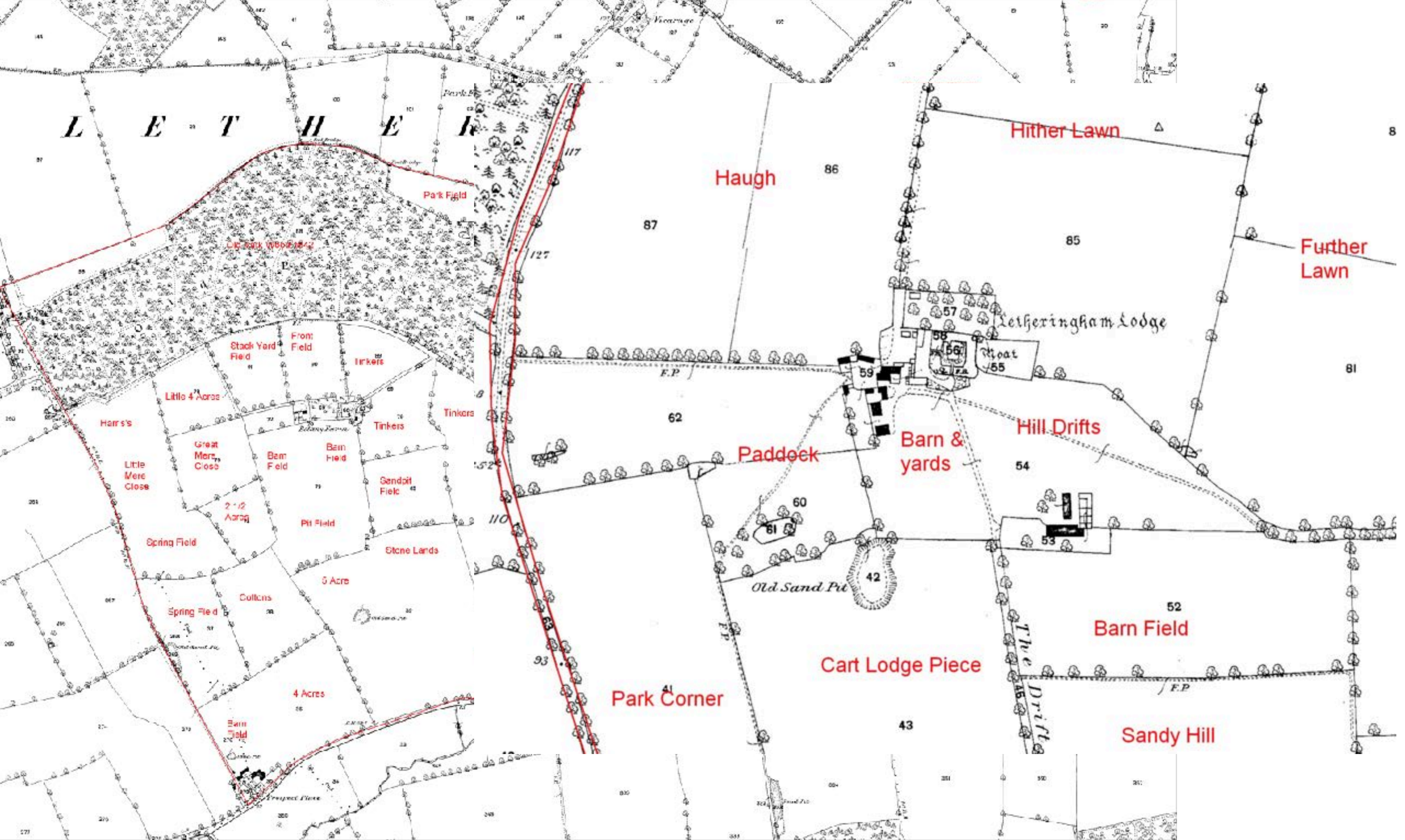


# 1883 Ordnance Survey Map

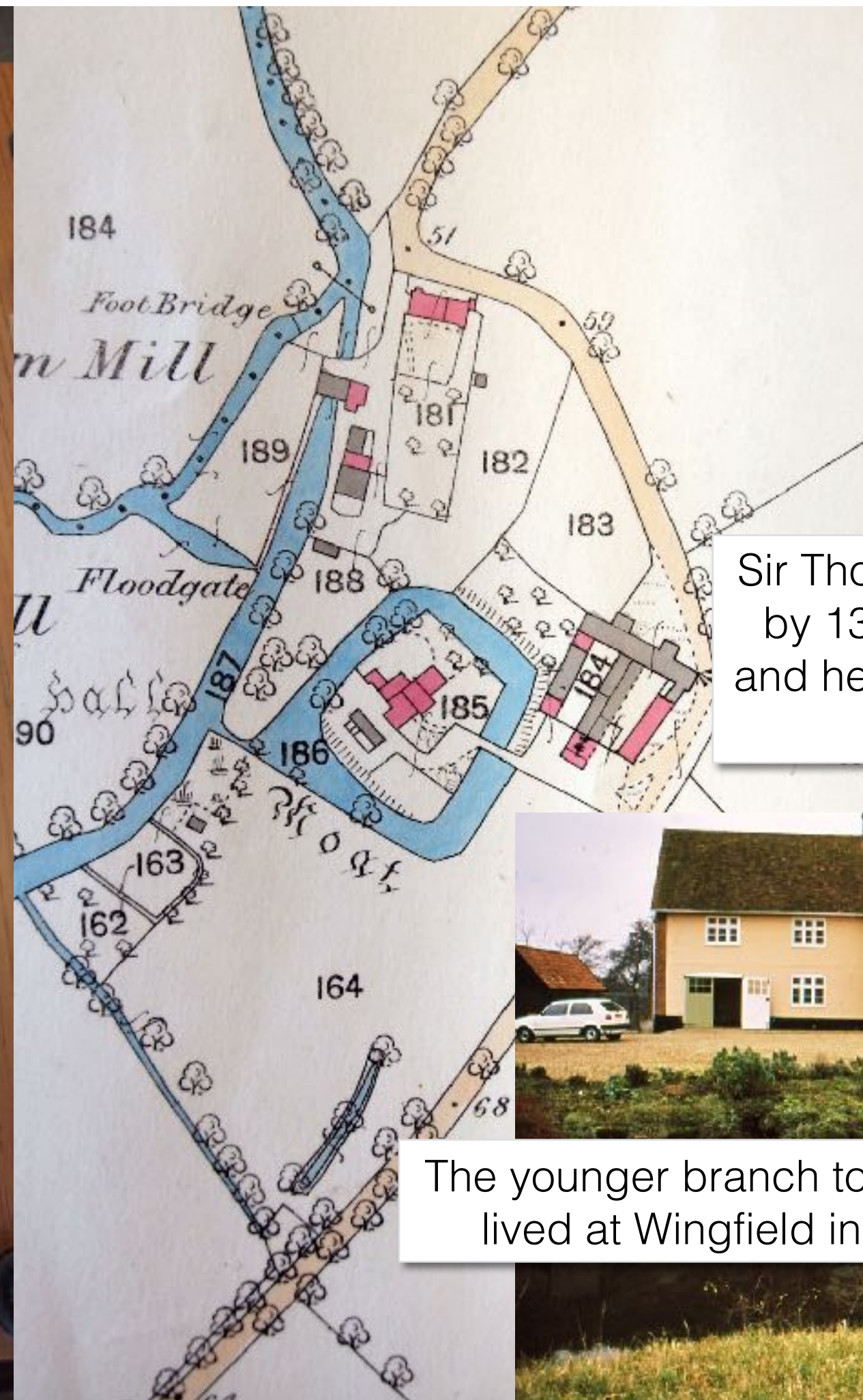
OS Map name 058/SE

Map of Suffolk. Originally published by Ordnance Survey, Southampton, 1881-1893.









Sir Thomas de Wingfield married,  
by 1361-2, Margaret, daughter  
and heiress of Sir William Bovill of  
Letheringham



The younger branch to those that  
lived at Wingfield in Suffolk.



# A number of Tudor hunting lodges exist

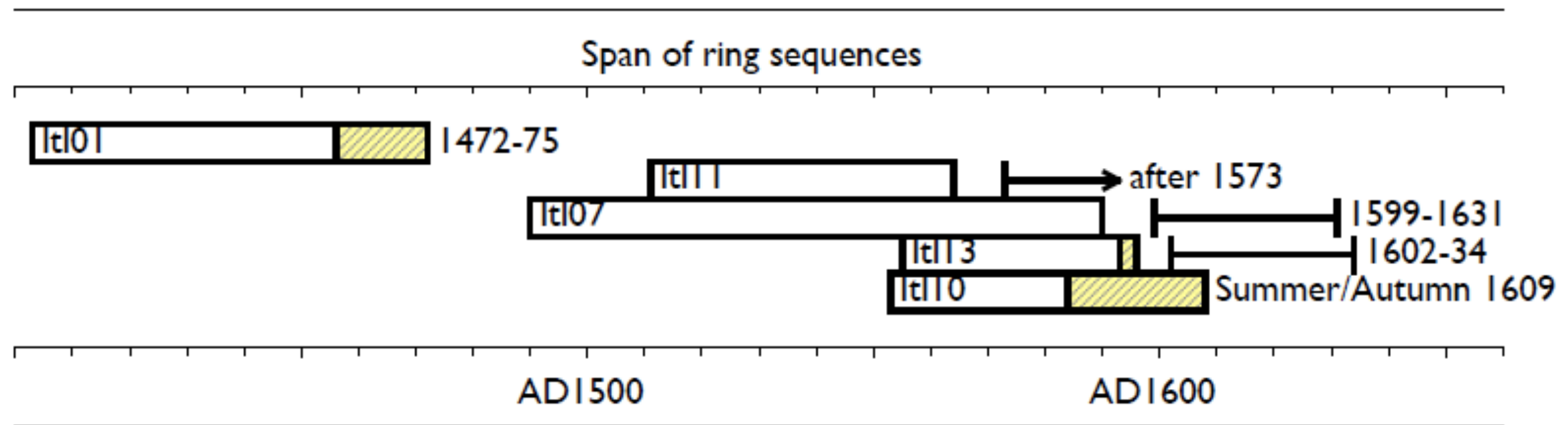


Most famous is the Great Standing  
Built in 1543 by Henry VIII  
Now called Elizabeth I Hunting Lodge  
in Epping Forest



Westenhanger Manor, Hythe,  
nr Folkestone





**Figure 3:** Bar diagram showing the relative positions of overlap of the dated sequences from Letheringham Lodge, along with the actual or interpreted felling dates. Yellow sections represent sapwood rings.



N.W. corner post has yielded a tree-ring date of 1472-5



Northern extension felling date 1609



# Kings of England and this Lodge



**Edward IV** was king and he had 2 reigns  
1461 –1470 and 1471 - 1483  
(Predecessor/Successor Henry VI)

**1472** Sir John Wingfield  
(1428-1481) builds Letheringham Lodge (Privy Councillor and Knight)

**Edward V** (1470 – c.1483)<sup>[1]</sup>

**Richard III** 1483 - 485, died 32 in the [Battle of Bosworth Field](#)

**Henry VII** 1485 - 1509, and the first monarch of the [House of Tudor](#).

**Henry VIII** 1509 until his death on 28 January 1547.

**grandson**

**1520** Sir Anthony Wingfield  
(1485-1552) (Vice-Chamberlain )  
gets married to Elizabeth de Vere  
and the Lodge is decorated with  
commemorative panelling





Sir John Wingfield d. 1481  
Privy councillor King Edward IV  
Elizabeth FitzLewis d.1500  
Buried North Chancel Letheringham Priory





## Sir John Wingfield, K.B. (1428-1481)

Made a Knight of the Bath at Edward IV coronation 1461; Privy Councillor to Edward IV 1462-3. On government commissions in Norfolk and Suffolk 1470-6 and 1478-81. On a commission to treat with commissioners for the king of France at Amiens 1477.

Married Elizabeth FitzLewis, daughter of Sir Lewis John of West Horndon, Essex, by Anne, daughter of John Montague, 3rd Earl of Salisbury

A lot of foreign influences and entertaining at the highest level in society...





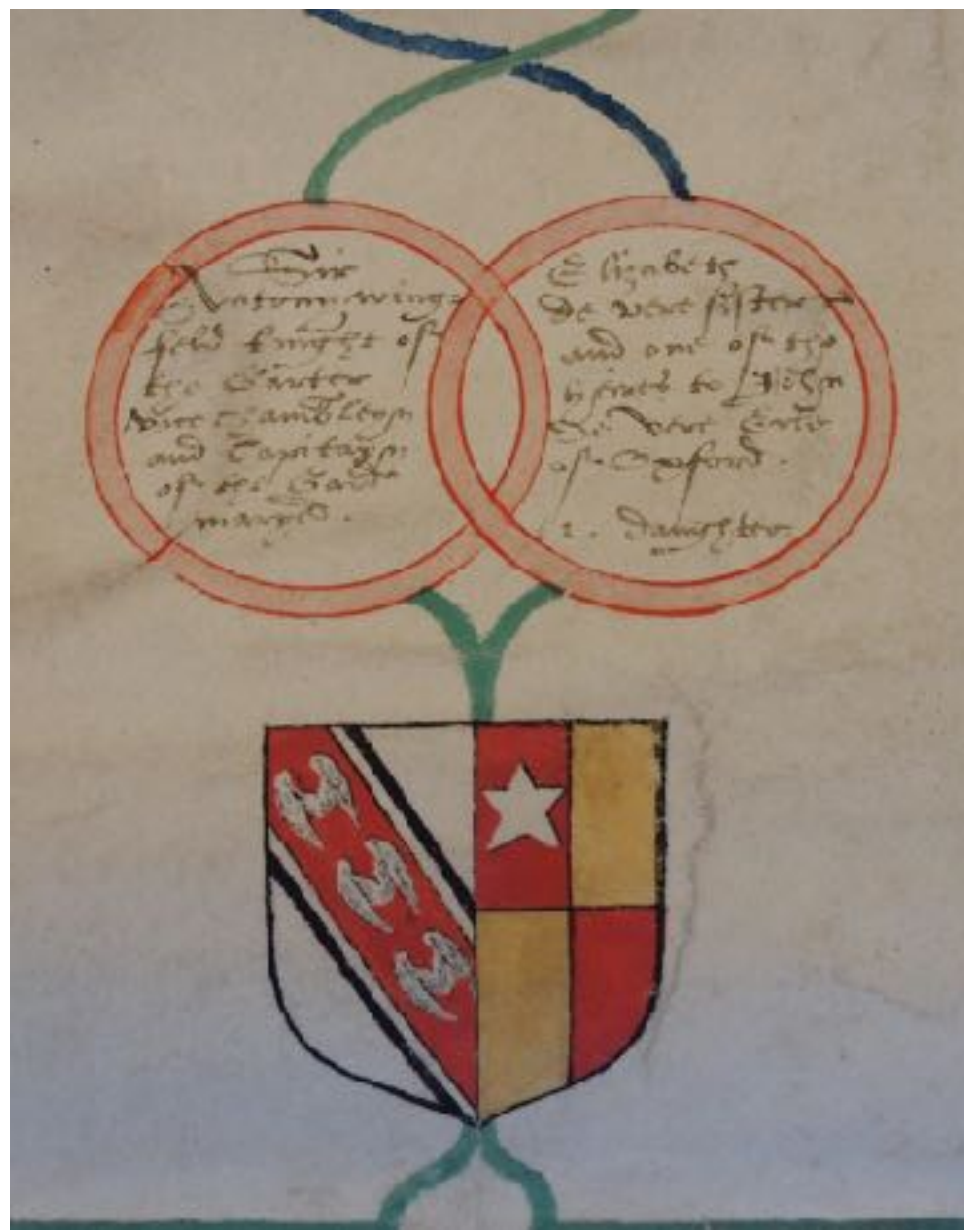
## Sir Anthony Wingfield, K.G. (c.1485-1552) grandson of Sir John Wingfield.

- Captain of the Guard
- Knight of the Garter
- Vice-Chamberlain of the Household to Henry 8,
- Assistant executor and led the guard at the funeral procession
- He attended the Field of the Cloth of Gold in 1520
- Fought in France 1523 the 1544 capture of Boulogne.

antony wingfield







Wooden panel with the arms and badges of Sir Anthony Wingfield (c.1485-1552) and his wife Elizabeth de Vere (married 1520)







1895





the National Trust  
for Scotland  
a place for everyone



## Sir Richard Wingfield of Letheringham (c. 1469 – 22 July 1525) laterly of Kimbolton Castle

Sir Antony Wingfield's brother also grandson of Sir John Wingfield who built the Lodge

2nd marriage to Bridget Wiltshire, friend and lady in waiting to Anne Boleyn  
**Bridget's letter (1553) to Anne used in her trial to justify her beheading**





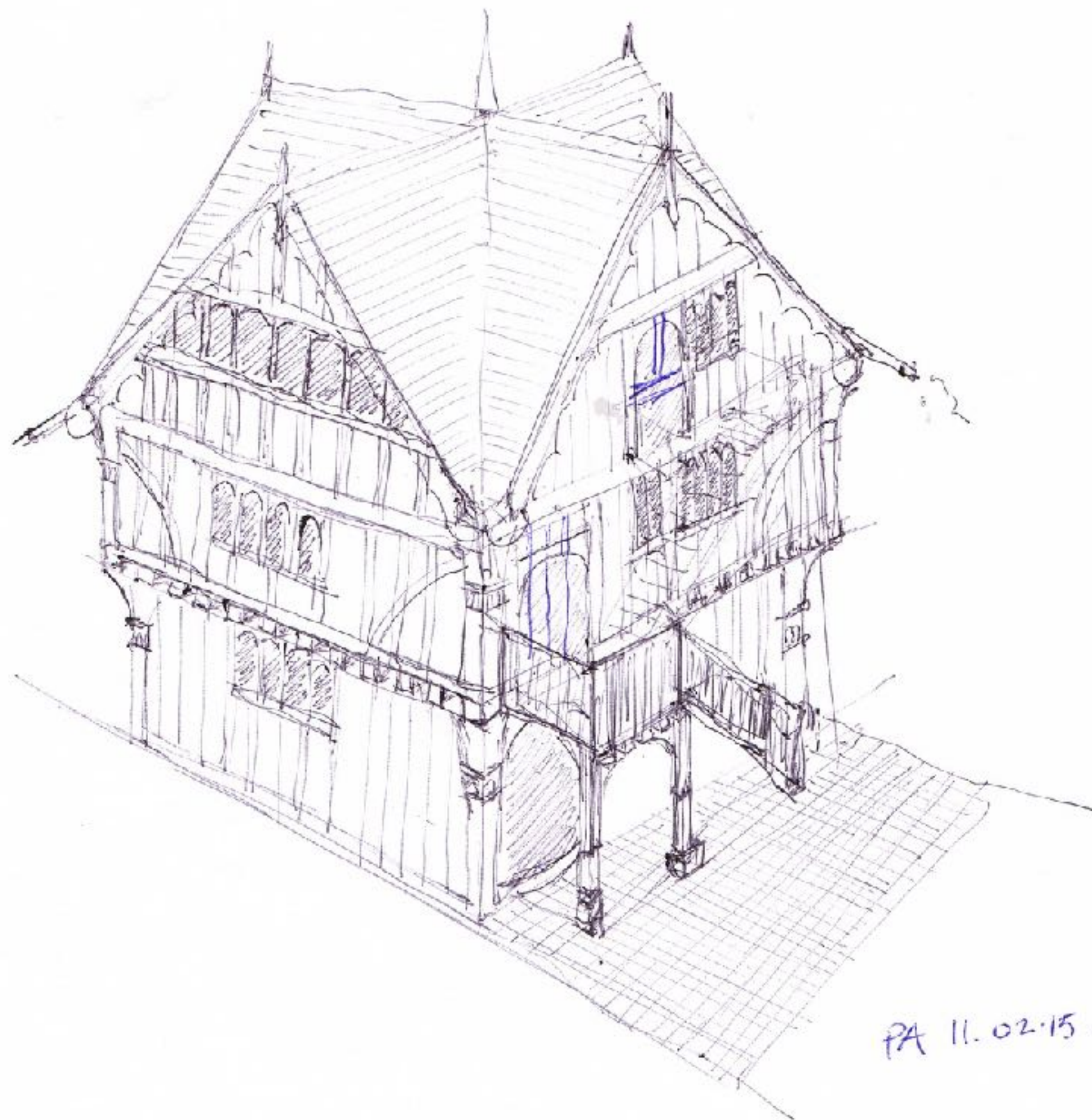
## **Sir Richard Wingfield (c. 1469 - 1525) - busy?**

"Sir Richard Wingfeild, Knt. of the Garter,  
Born c.1469. Named in his mother's will 1497.  
1497 A commander, with his brother Sir John, against the Cornish rebels.  
1505 Went on pilgrimage to Rome with his brother Robert.  
1511 Appointed Knight Marshal of Calais  
1513-9 joint Lord Deputy of Calais Created a knight banneret at the siege  
of Tournay,  
1513. An ambassador to the Low Countries  
1512-6, and to France 1515. A royal councillor by 1514.  
1519. Appointed to the privy chamber  
1520 Resident ambassador to France  
1522 Appointed a Knight of the Garter  
1522 Granted the castle and manor of Kimbolton  
1523 Chancellor of the Duchy of Lancaster High Steward of Cambridge  
University  
1524. Sent as an ambassador to Spain, he died of dysentery 22 July 1525  
at Toledo, bur. in the church of the Friars Observants of San Juan de los  
Reyes at Toledo. Sir R.W., K.G., will dated 6 Apr. 1525, proved 1525  
P.C.C."



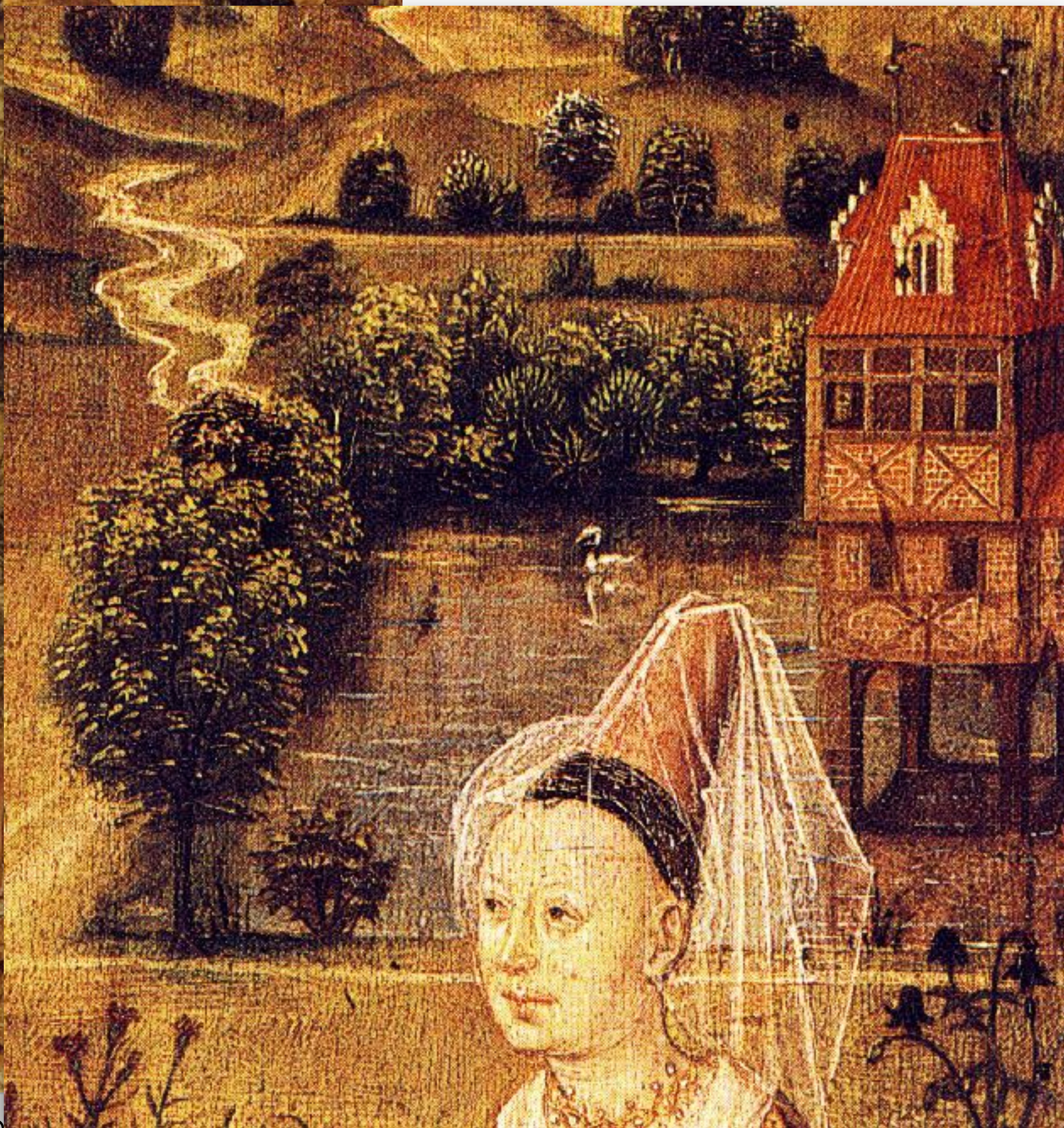
How was the Lodge used or  
imagined?





PA 11.02.15.





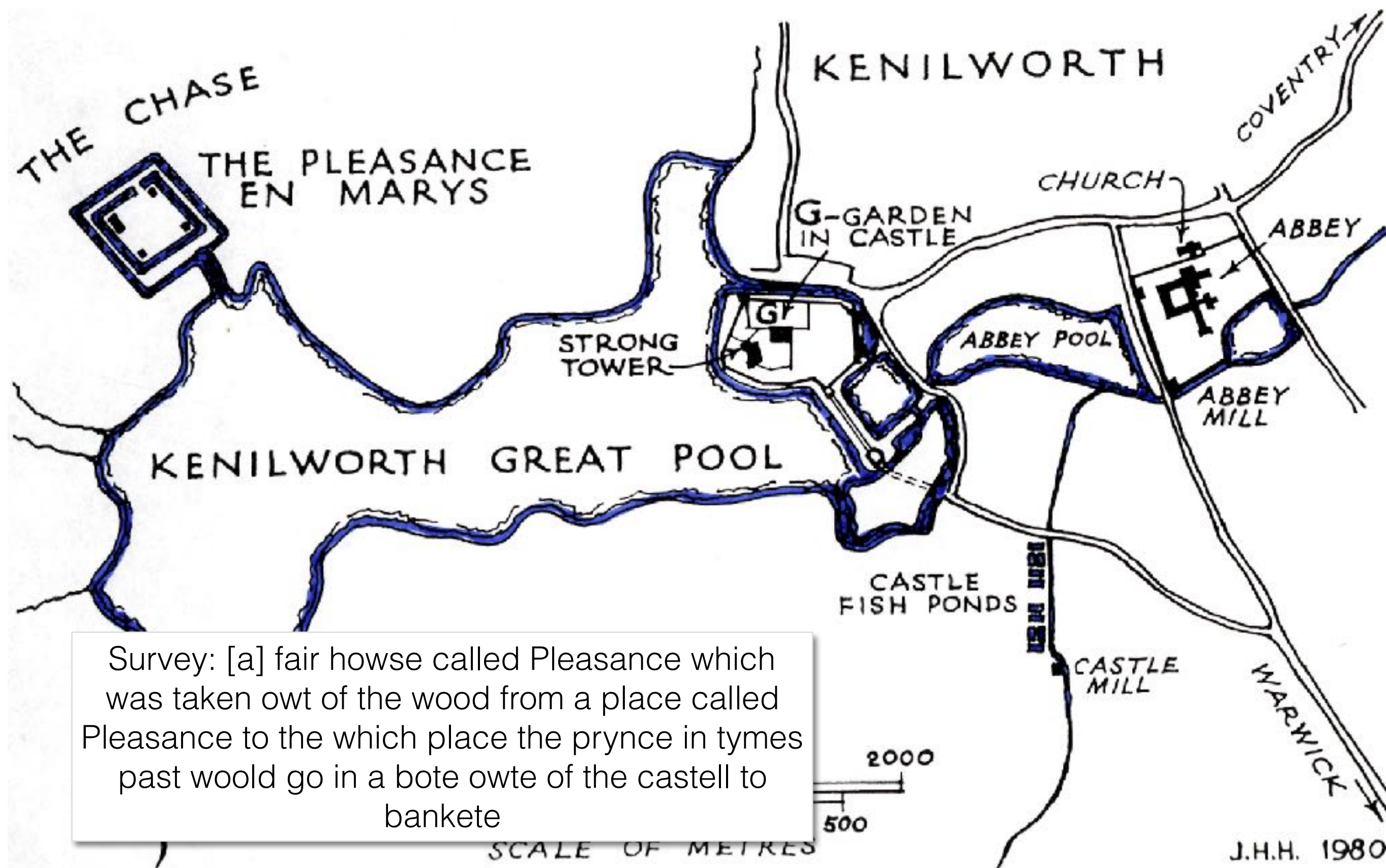
'Lovers in a country scene, Upper Rhineland, c.1480



Wedding Party in the Park of Hesdin,  
C16 copy of a C15 panel painting  
The park at Hesdin, Pas-de-Calais,  
France, created by Count Robert II of  
Artois, late 13th century, later used  
by the dukes of Burgundy.  
li paveillon dou Marés – reached by  
a large bridge near the fish pond  
and stood on the northern shore of  
the river Ternoise. Contained a  
kitchen and two galleries for  
entertainment

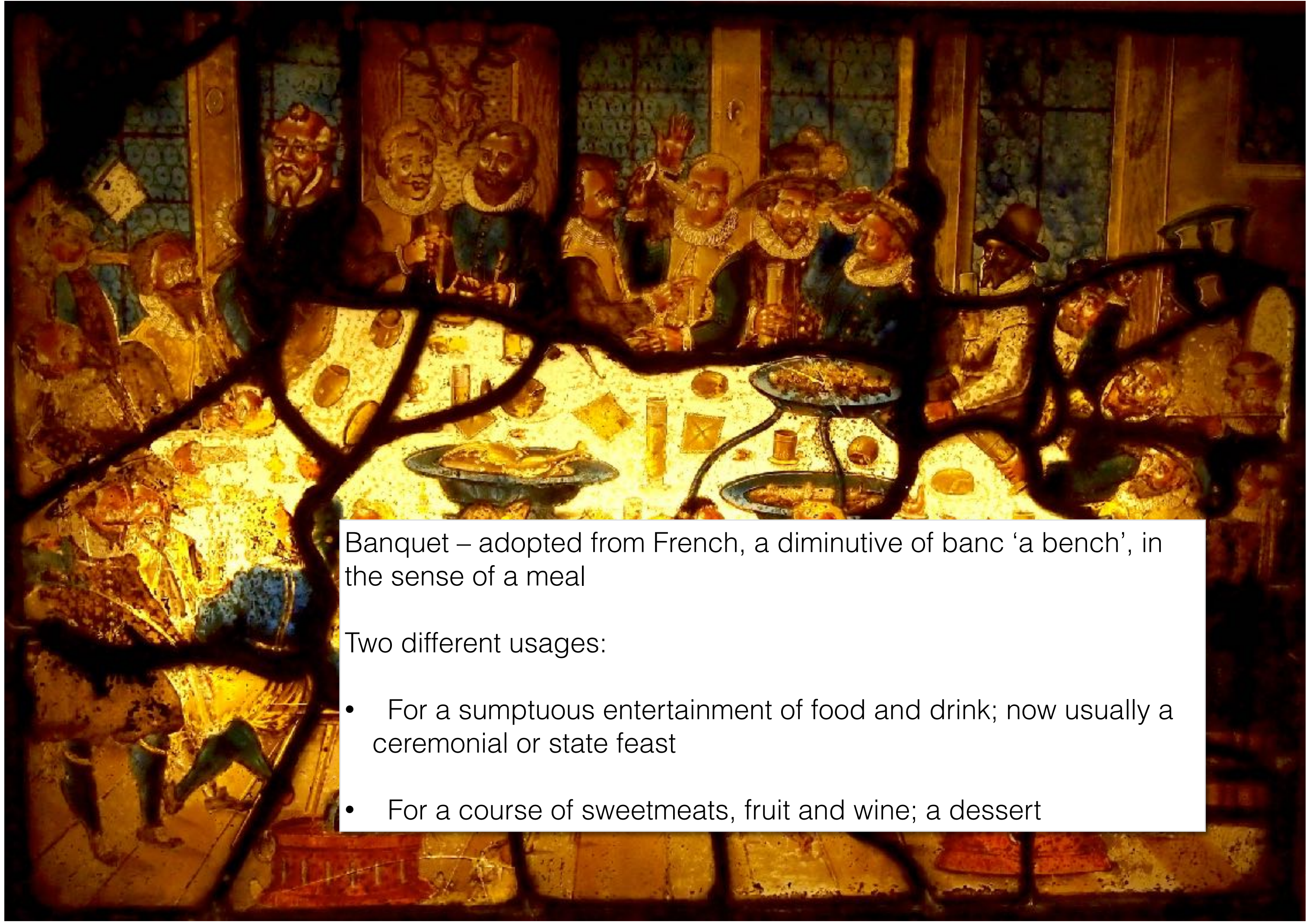






Survey: [a] fair howse called Pleasance which was taken owt of the wood from a place called Pleasance to the which place the prynce in tymes past woold go in a bote owte of the castell to bankete





Banquet – adopted from French, a diminutive of banc ‘a bench’, in the sense of a meal

Two different usages:

- For a sumptuous entertainment of food and drink; now usually a ceremonial or state feast
- For a course of sweetmeats, fruit and wine; a dessert





Pieter Pourbus (1523-1584): 'An allegory of true love', c.1547



The Jacobean period James VI of Scotland (1603–1625)  
The Lodge turns into a house in 1610





# Kings of England and this Lodge

**Edward IV** 1471 - 1483

Edward V 1470 – c.1483

Richard III 1483 - 485

Henry VII 1485 - 1509

**1472** Sir John Wingfield  
(1428-1481) builds Letheringham  
Lodge (Privy Councillor and  
Knight)

grandson

**Henry VIII** 1509 -1547

grandson

**1520** Sir Anthony Wingfield's  
commemorative panelling (Vice  
Chancellor

**1533** Sir Richard Wingfield's wife  
helped behead Anne Boleyn (Knight  
of the Garter

grandson

Edward VI 1547- 1553

Mary I 1553-1558

Elizabeth I 1558-1603

**James VI** 1603-1625

**1606** Edward Wingfield is biggest  
financial backers for colonising US

grandson

**1609** Thomas Wingfield extends Lodge



## **Edward Maria Wingfield, (1550 in Stonely Priory, near Kimbolton – 1631)**

soldier, Member of Parliament, (1593) and English colonist in America. He was the son of Thomas Maria Wingfield, and the grandson of Sir Richard Wingfield.



Captain John Smith wrote that from 1602–03 Wingfield was one of the early and prime movers and organisers in "showing great charge and industry"[1] in getting the Virginia Venture moving: he was one of the four incorporators for the London Virginia Company in the Virginia Charter of 1606 and one of its biggest financial backers.

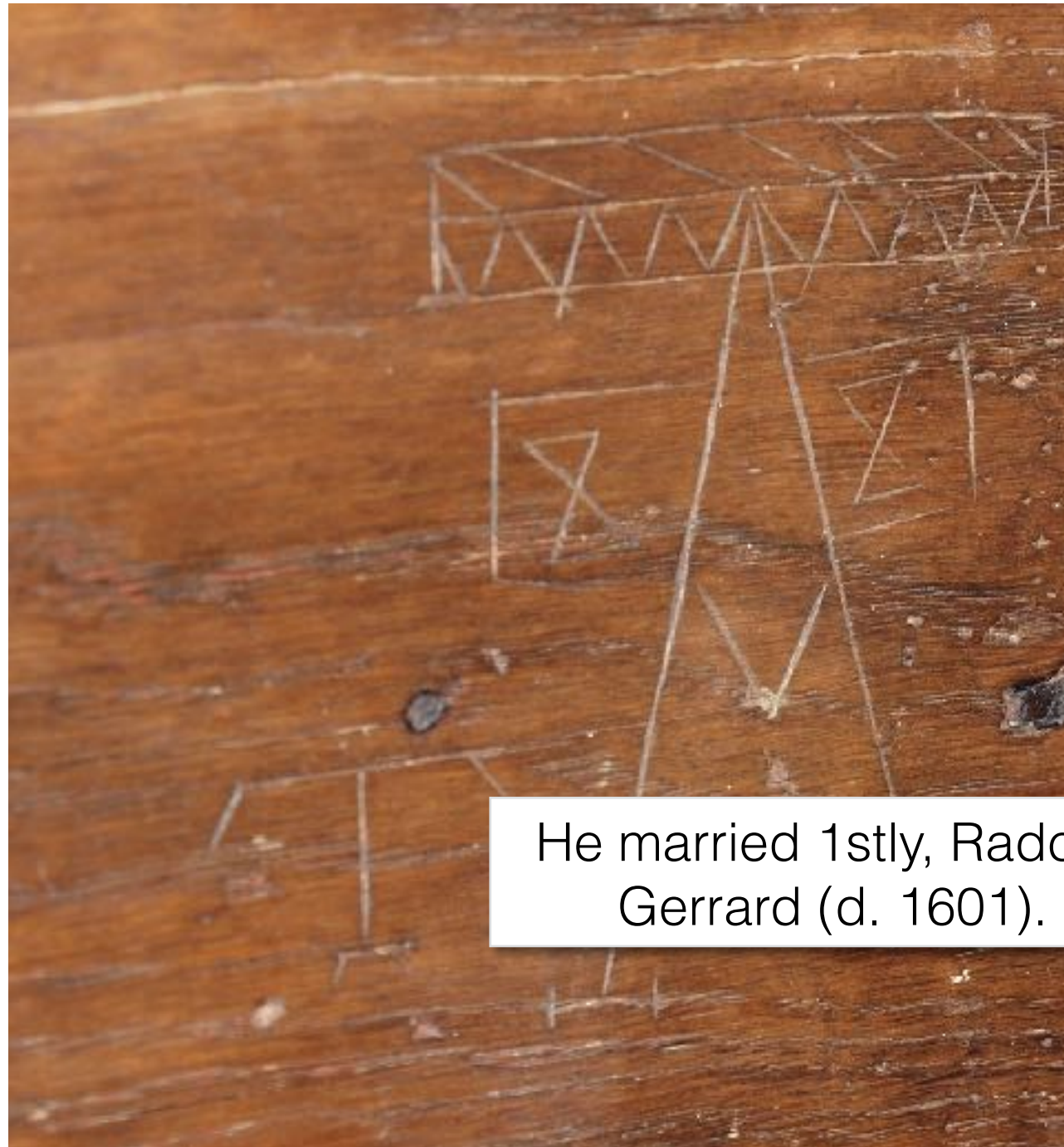
*1. Savage Kingdom: The True Story of Jamestown, 1607, and the Settlement of America Paperback by Benjamin Woolley*



**Sir Thomas Wingfield (c.1558-1610).**

Grandson to Sir Antony Wingfield

Knighted 1606 by King James at Greenwich. Sheriff of Suffolk but died in office in Jan. 1609/10 of smallpox. Probably started the extension at the Lodge.



He married 1stly, Radcliff  
Gerrard (d. 1601).





He married 2ndly, 1601, Elizabeth Drury (1584-1620) daughter of Sir Drue Drury of Riddlesworth in Norfolk. Given the 'profittes of my parke and Lodge in Letheringham and Wickham' in her husband's will. She remarried Aug. 1610, Henry Reynolds gent. of Belstead





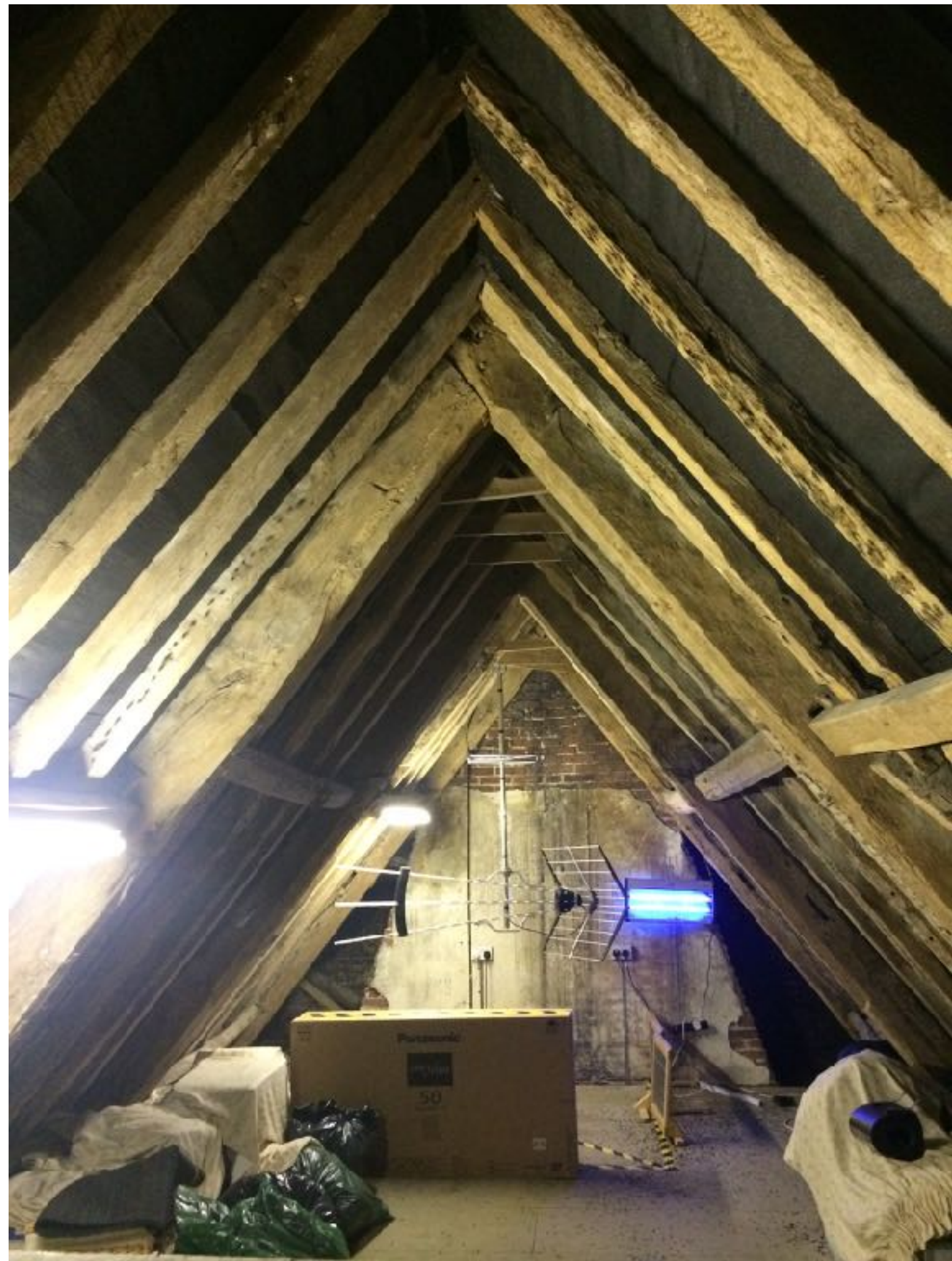
# E Wingfield nee Drury

- Married in 1601 at 17 to Thomas Wingfield (43)
- 2 children (daughter in 1603, son Antony in 1606) widowed in 1609 at 25
- widowed in Jan 1610, married in August 1610.
- Court Case in 1615
  - Talk of her having an affair with her husband's steward William Naunton.
  - Married Henry Reynolds against family will - he was socially beneath her.
  - In a court case 1615 her father claimed Mr Reynolds was stealing her money.
  - Mr Reynolds claims to have paid £2,000 for the extension to the lodge, which seems to have been accepted.



Future work ...







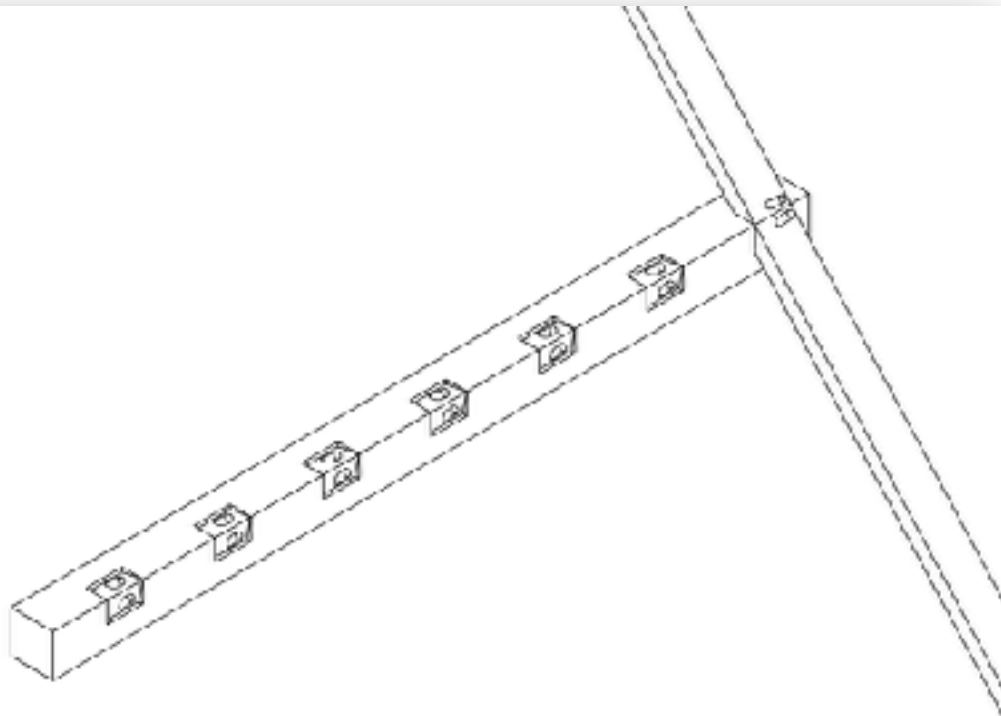








# Queenpost roof



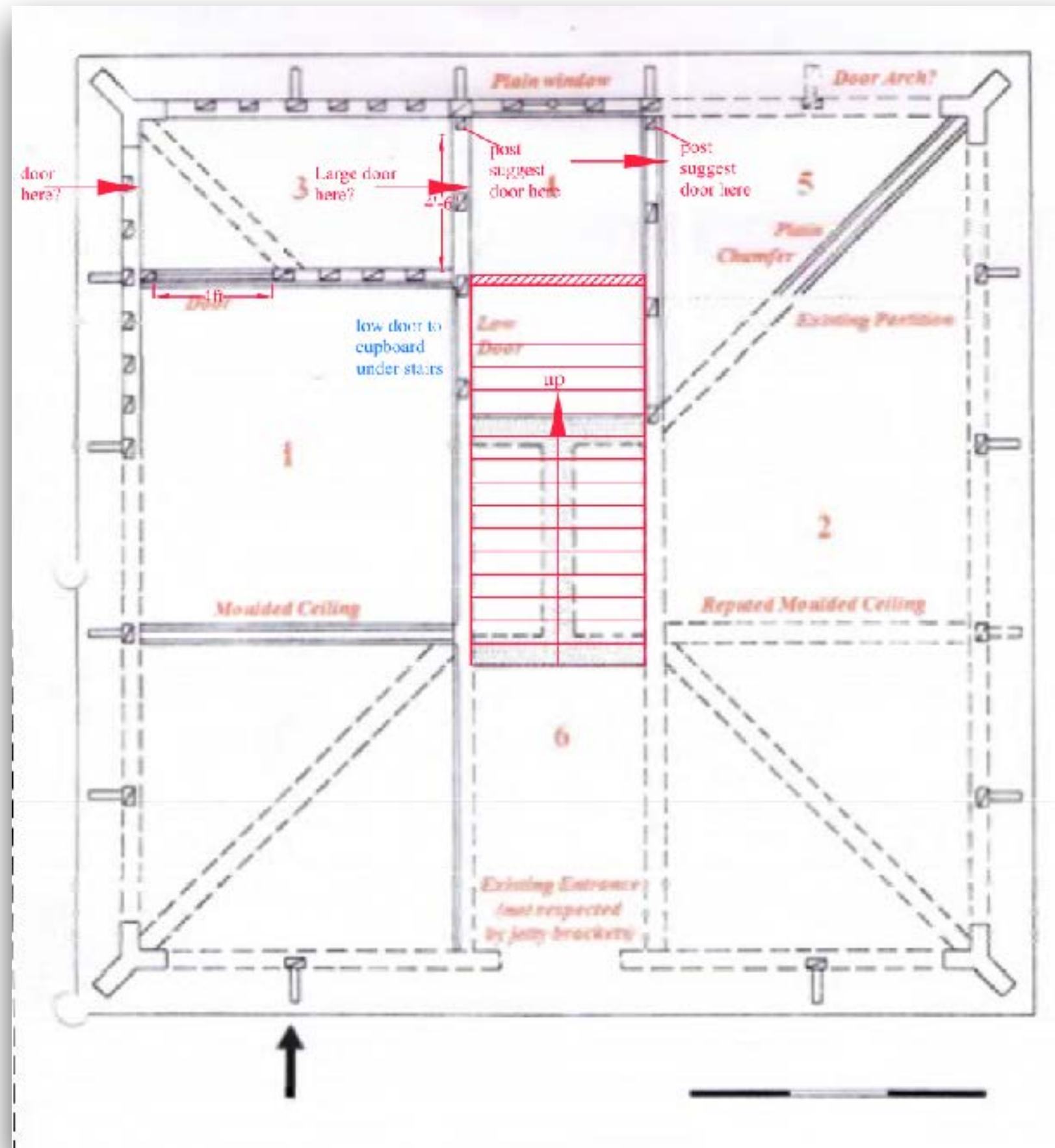
Side purlin in an East Anglian queenpost roof



John Walker



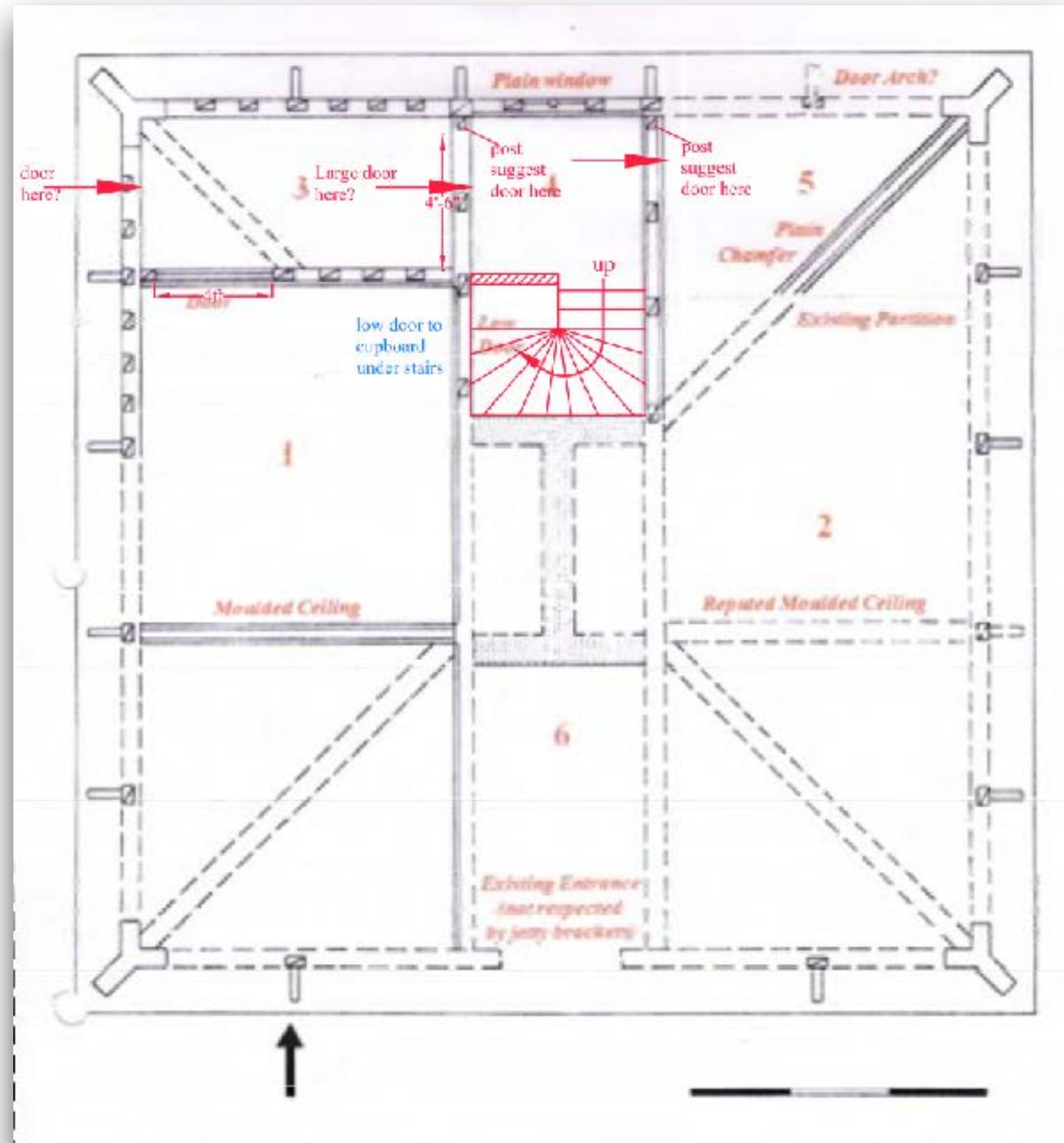
# Where were the stairs?



Leigh Alston  
John Walker



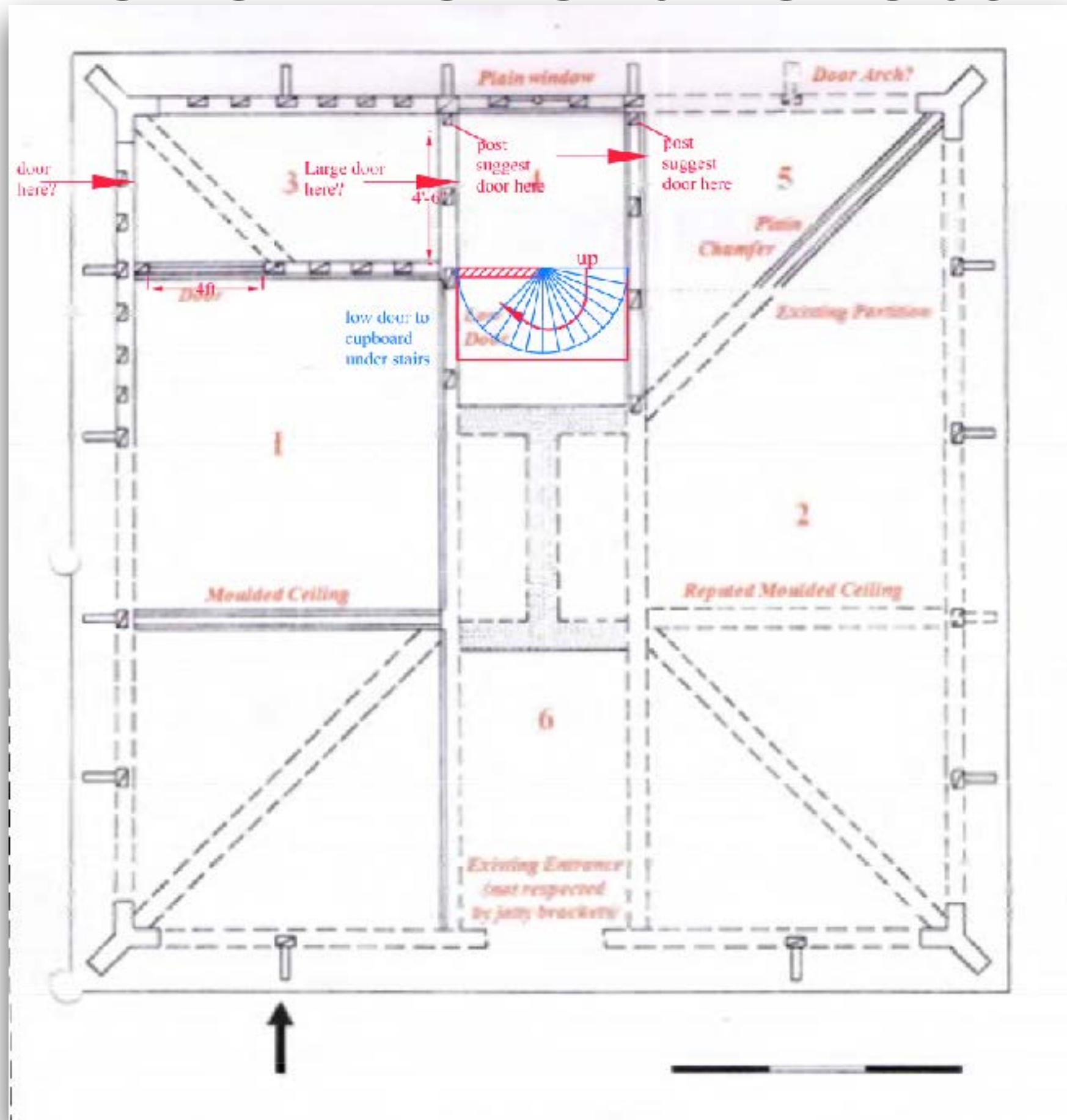
# Where were the stairs?



Leigh Alston  
John Walker



# Where were the stairs?



Leigh Alston  
John Walker



# Anne Boleyn connection?





Keep up-to-date at :  
[www.letheringhamlodge.com](http://www.letheringhamlodge.com)





## The Glorious Guest House - ideal for families and friends



**The Glorious Guest House has 4 bedrooms (2 double, 2 single) 2 bathrooms with baths and showers, your own private moated BBQ island**

It's enchanting, cosy and sleeps six in comfort, with woodburner and outside dining. A real home from home, it even has continental breakfast ready for your first morning!

Secluded and safe for children, we have a travel cot and high chair on request.



Prices start from only £94 per night plus cleaning. [Click here to check availability and book on-line instantly](#)



## Romantic Rose Cottage because you did promise her a rose garden!

**Romantic Rose Cottage has 1 double bedroom plus lounge sofabed. Induction range cooker with ice maker in the fridge freezer plus private garden with your own yoga studio and outside dining area**

Enjoy a secluded BBQ with private dining or cuddle up with the cosy log burner. One luxurious double bed and a high-end double sofa bed, it is ideal for a couple with one child or a furry friend.

The kitchen has an ice maker, washer/dryer, induction range and huge fridge/freezer - perfect for a long stay for people who love cooking!



Prices start from only £94 per night plus cleaning. [Click here to check availability and book on-line instantly](#)



# Fairytale Swan Cottage for a dreamlike getaway?



The upstairs bedroom window and lounge window to Swan Cottage

**Fairytale Swan Cottage has one double bedroom with sofa bed in lounge, and luxury bath in bedroom as well as shower room**

This is where you come to switch off, drop out and discover another you! This really is a cosy romantic hideaway in the middle of nowhere but still close to Aldeburgh, Southwold and the famous Shingle St beach.

The bath in the bedroom will add a little luxury to reading the Sunday newspapers!



Prices start from only £64 per night plus cleaning. [Click here to check availability and book on-line instantly](#)